



DESIGNED TO MOVE [YOU]™

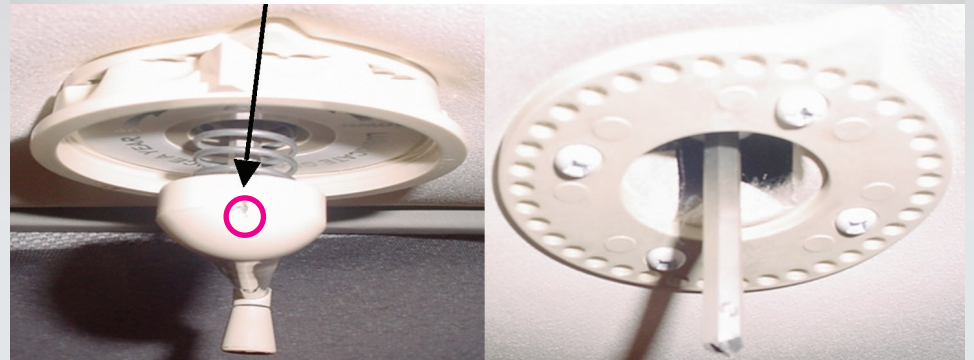
[www.JensenRVDirect.com](http://www.JensenRVDirect.com)

# ANHD20RTL12 INSTALLATION GUIDE

## TOOLS & SUPPLIES

- 1 Drill or Battery Driver with a #2 Philips bit
- 2 Putty Knife
- 3 3/32" Allen wrench
- 4 Electrical Tape
- 5 Exterior Roof Sealant (Non-hardening type)

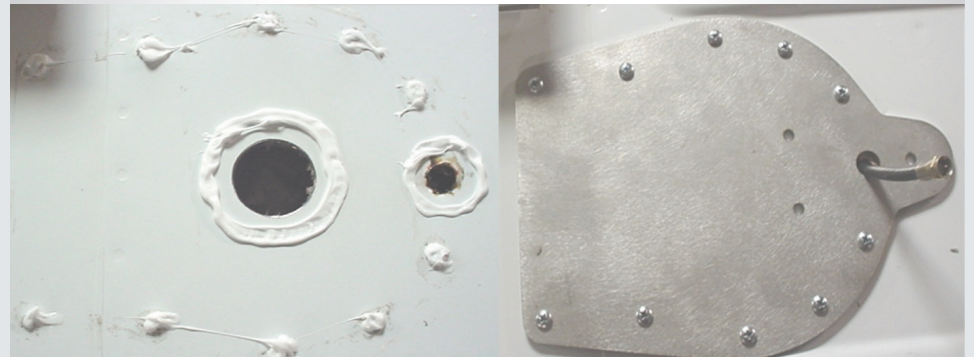
- 1 Crank existing antenna to full elevation.
- 2 Remove **3/32" set screw** from crank. Remove crank, spring, directional handle, & 4 screws.



- 3 Remove sealant & screws from base, remove antenna and clean surface



- 4 Apply sealant to all holes & attach exterior plate using the included hardware



**5** Apply sealant to holes and attach base using the included hardware.



**6** Apply sealant to 3 screws, fill coax hole, connect coax to antenna and wrap connection with insulating electrical tape. Coax connection should be located inside vertical stalk of antenna for service.



**7** Attach antenna to base and seal all seams and screws on plate and antenna base.



**8** Install interior plate using included hardware over hole in ceiling.



**9** Remove plate from wall and disconnect all wires and cables (note power/ground polarity & cable labels).



**10** Connect appropriate cables / wires and install new plate. Tape all coax connections.



**ASA**electronics  
THE MOBILE ELECTRONICS COMPANY SINCE 1977  
ASA ELECTRONICS CORPORATION  
[www.jensenvdirect.com](http://www.jensenvdirect.com)  
[www.asaelectronics.com](http://www.asaelectronics.com)  
© 2010 ASA Electronics Corporation

Refer to the ANHD20  
Installation/Operation for  
additional installation details.